

Animal Behaviour

The ideas on this worksheet can be used alone or in conjunction with activities outlined on worksheet AB1

Behavioural Adaptation & Survival

- Using a variety of different animals as examples, research the behaviours performed by the species in its natural environment.
- Divide the different behaviours you have found into groups according to whether they are:
 - Reproductive behaviours
 - Feeding behaviours
 - Defence/attack behaviours
 - Social behaviours
- Are the behaviours *innate* to the species or *learned* by each individual?
- Discuss how the behavioural adaptations enable survival of:
 - The individual animal
 - The species

Normal Behaviour & Animal Welfare

- Discuss potential problems that might arise when an animal is prevented from performing the natural behaviours that it is driven to perform.
- Research the animal welfare problems arising from preventing expression of normal behaviour when animals are kept in captivity.
- Discuss ways in which the captive environment can allow expression of normal behaviour - maybe design an enclosure for an animal.



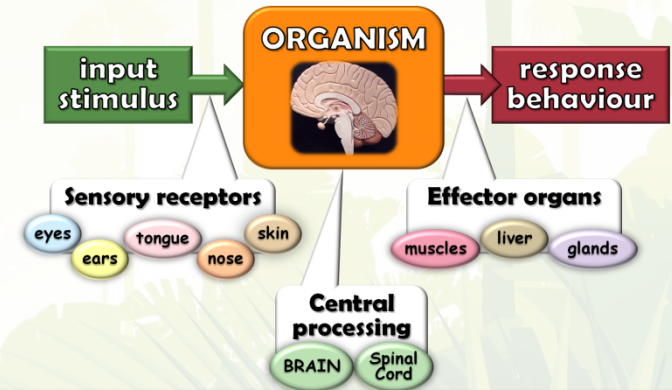
Expressing Normal Behaviour

- Animals are highly motivated to perform certain behaviours which have developed as the species has evolved and adapted to its natural habitat over the years.
- An animal's welfare is negatively affected if it is prevented from performing the behaviours which are "normal" for the species.
- Using a variety of different animals as examples, research and discuss what you think are "normal behaviours" for the species.



Mechanism of Behaviour

- Create a "Day in the Life of..." display for an animal (real or imaginary!)
- For each behaviour the animal might perform, work out the input stimuli, output responses, and the receptor and effector organs involved.



From the Jungle to your Living Room!

- Get pupils to observe/ think about the behaviours that their pets perform.
- Research the wild species that the pet species are related to or domesticated from.
- Discuss the behaviours observed in domesticated species. Do the behaviours perform the same function as they do in the nearest related wild species?
- Create a display to encourage understanding of domestic species taking into account their ancestral heritage!